

VERTICAL 2-LOBES ROOT BLOWER



SS Series

Features

- The special design vane works smoothly.
- High pressure, great flow
- Design of non-oil lubrication, clean air output.
- Noise-free due to high precision of gears and special design of silencing equipments
- Compact structure is easy to fix and safe to use

Application

The products are widely used in small and medium-sized fish farms and factories engaging in oil, chemicals, textiles, etc.



Specification

Model	Voltage	Power	Pressure	Impeller Structure	Weight	Dimensions (mm)
SS32-LB	240/415	1100W ~ 3000W	0~25KPa	Standing Mode TWO/THREE	25kg	318x352x346
SS50-LB	415	2200W ~ 4000W	0~49KPa	Standing Mode TWO/THREE	26kg	375x391x370

Model	Oxygen (KgO2/h)	Power (KgO2/kWh)	Water Surface (acres)	Microporous Tube length (m)	No of Diffusion Aerator
SS32-LB	> 10	> 7.7	0.67 - 1	250 - 350	15 - 25
SS50-LB	> 19	> 8.6	1 - 1.67	350 - 500	25 - 35



THONG FATT JAYA MACHINERY HARDWARE SDN. BHD.

同發機械五金有限公司 (176024-V)

775-779, Jalan Kuala Kangsar, Taman Tasek Jaya,
31400 Ipoh, Perak. Malaysia.
Tel: 00-605-5468 659, 5455 751, 5479 196, 5454 107
Fax: 00-605-5482 282, 5474 753
Email: sales@thongfattjaya.com.my
Website: http://www.thongfattjaya.com.my

VERTICAL 2-LOBES ROOT BLOWER



0.75kW

1.1kW

1.5kW

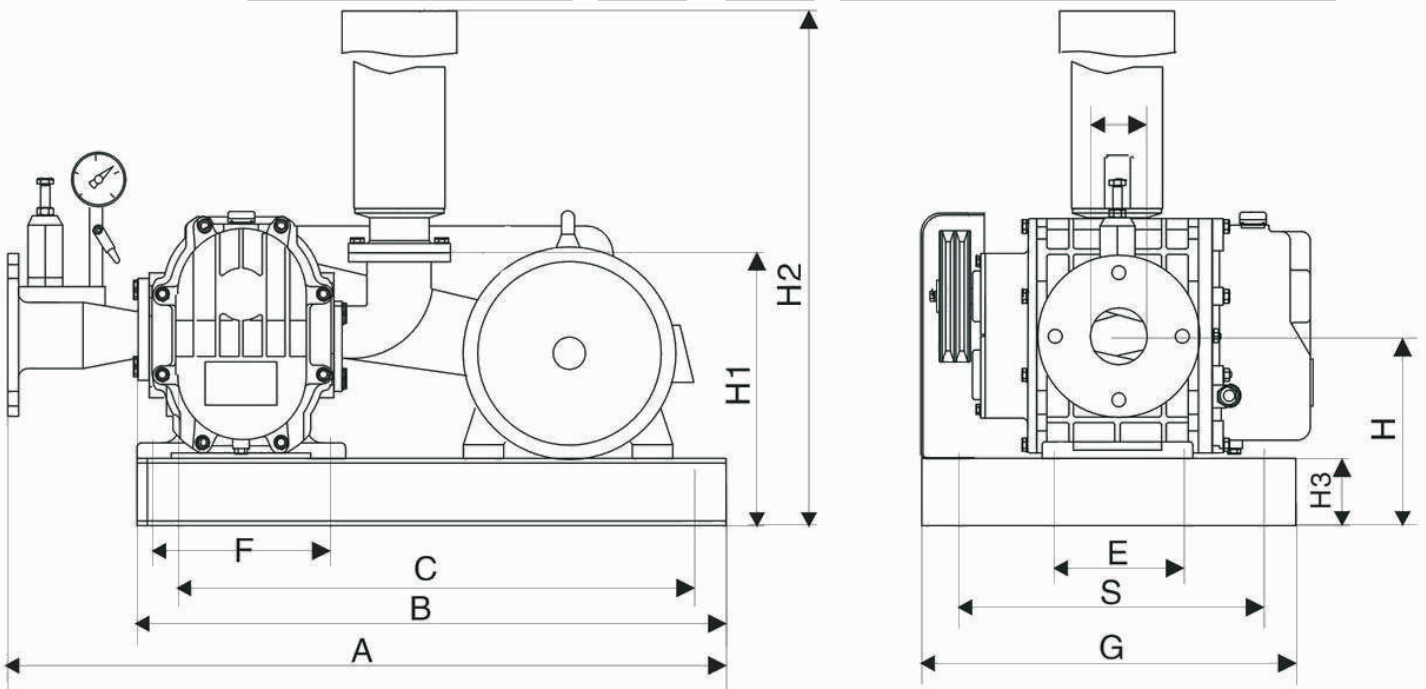
2.2kW

3kW

4kW

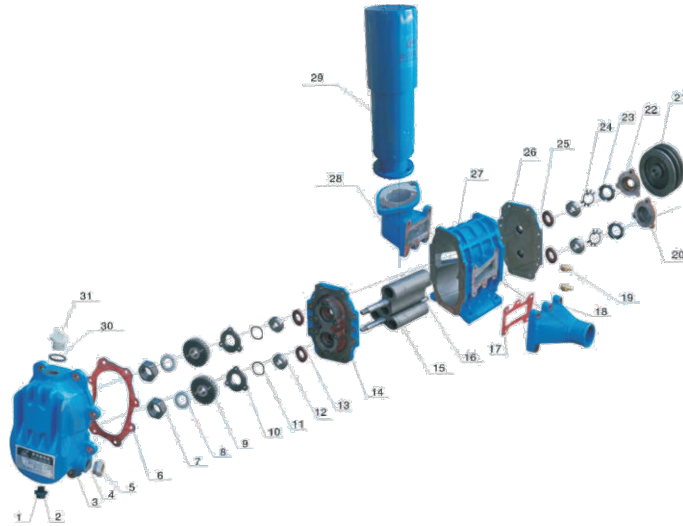
Model	Outlet Diameter (mm)	Speed (rpm)	1000mmH ₂ O		2000mmH ₂ O		3000mmH ₂ O		4000mmH ₂ O		5000mmH ₂ O	
			9.8kPa		19.6kPa		29.4kPa		39.2kPa		49kPa	
			m ³ /min	kW	m ³ /min	kW	m ³ /min	kW	m ³ /min	kW	m ³ /min	kW
SS32-LB	32(1 1/4")	1550	0.89	0.37	0.86	0.55	0.82	0.75	0.80	1.1	0.74	1.1
		1650	0.95	0.37	0.93	0.55	0.89	0.75	0.83	1.1	0.79	1.1
		1750	1.01	0.55	0.97	0.75	0.93	1.1	0.89	1.1	0.84	1.5
		1850	1.06	0.55	1.03	0.75	0.98	1.1	0.83	1.1	0.89	1.5
		1950	1.11	0.55	1.10	1.1	1.04	1.1	0.98	1.5	0.93	1.5
SS50-LB	50(2")	1550	1.93	0.75	1.53	1.5	1.2	1.5	1.06	1.5	0.93	2.2
		1650	2.06	0.75	1.67	1.5	1.4	2.2	1.25	2.2	1.06	2.2
		1750	2.17	1.1	1.73	1.5	1.53	2.2	1.33	2.2	1.2	2.2
		1850	2.33	1.1	1.86	1.5	1.63	2.2	1.5	2.2	1.33	3.0
		1950	2.47	1.5	2.0	2.2	2.25	2.2	1.61	3.0	1.46	4.0

Dimensions

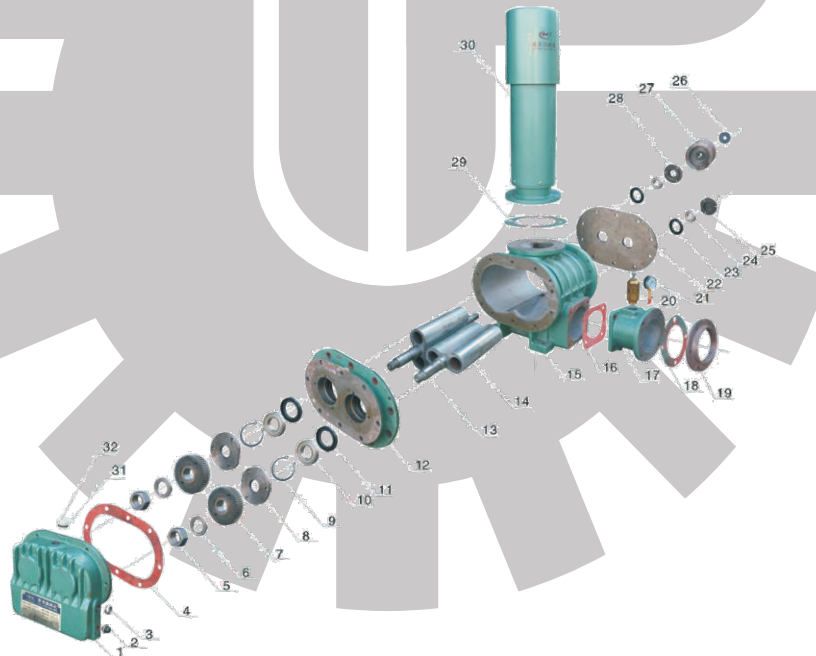


Model	A	B	C	E	F	G	S	H	H1	H2	H3	D	Foot Bolt	Remark
SS32-LB	510	525	350	85	140	316	230	150	220	395	50	42	8-M10x200	1 1/2"
SS50-LB	650	550	450	120	165	352	268	178	248	415	63	60	8-M10x300	2"

VERTICAL 2-LOBES ROOT BLOWER



No.	Description	No.	Description	No.	Description	No.	Description
1	Oil Drain Plug	9	Gear	17	Gasket	25	Oil Seal
2	O Ring	10	Bearing Cover	18	Outlet Adaptor	26	Bearing Housing - Right
3	Gear Cover	11	Wave Washer	19	Grease Nipple	27	Main Body
4	O Ring	12	Ball Bearing	20	Bearing Housing - Right	28	Inlet Adaptor
5	Oil Gauge	13	Oil Seal	21	Pulley	29	Inlet Silencer
6	Gasket	14	Bearing Housing - Left	22	Bearing Cover - Right	30	O Ring
7	Nuts	15	Secondary Rotor	23	Nuts	31	Oil Filling Plug
8	Gasket	16	Drive Rotor	24	Lock Washer		



No.	Description	No.	Description	No.	Description	No.	Description
1	Gear Cover	9	Circlip	17	Outlet Flange	25	Bearing Housing - Right
2	Drain Plug	10	Ball Bearing	18	Gasket	26	Washer
3	Oil Gauge	11	Oil Seal	19	Outlet Flange	27	Pulley
4	Gasket	12	Bearing Housing - Left	20	Safety Valve	28	Bearing Cover - Right
5	Bolt	13	Drive Rotor	21	Pressure Gauge & Valve	29	Gasket
6	Washer	14	Secondary Rotor	22	Bearing Housing - Right	30	Inlet Silencer
7	Gear	15	Main Body	23	Oil Seal	31	O Ring
8	Bearing Cover	16	Gasket	24	Ball Bearing	32	Oil Filling Plug