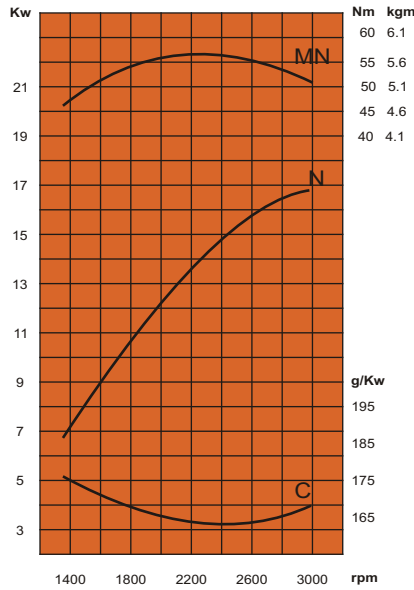


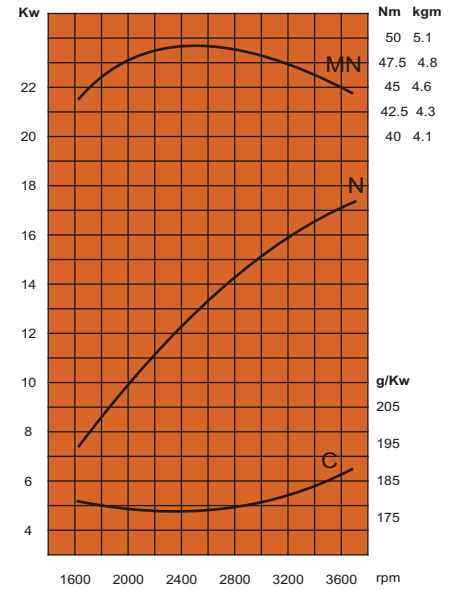
AIR-COOLED DIESEL ENGINE



TF 290

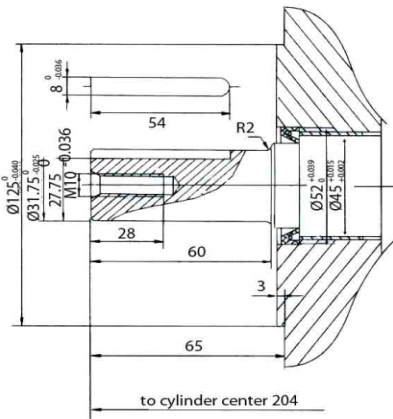


Outside Characteristic Graph (3000rpm)

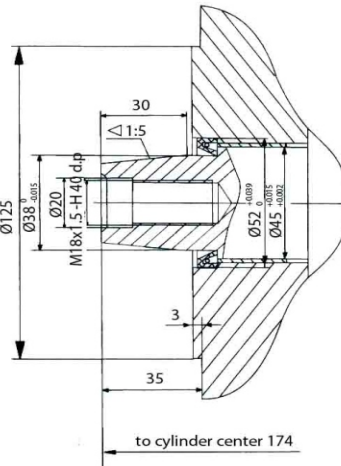


Outside Characteristic Graph (3600rpm)

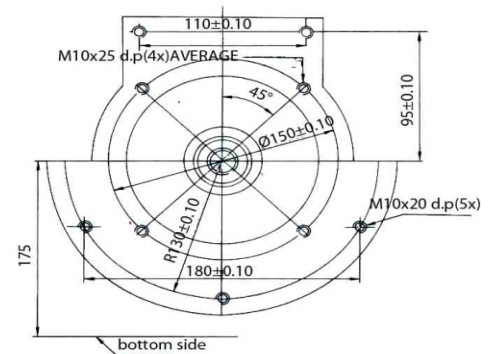
Q-Type



V-Type



Dimensions



Unit:mm

Model	TF 290
Engine Type	2 Cylinders, 4 Stroke, Air-cooled, Direct Injection
Bore x Stroke	90mm x 75mm
Displacement	954ml
Compression Ratio	19:1
Rated Output Power	14.4Kw(19.6HP)/3000rpm 15Kw(20HP)/3600rpm
Engine Speed	3000rpm/3600rpm
Start Model	12V Electric Starter
Fuel	Light Diesel Oil
Fuel Tank Capacity	7.0L
Fuel Consumption	≤200g/Hp.h/3000rpm ≤220g/Hp.h/3600rpm
Cooling System	Forced Air-cooled
Lube	LECD Grade 15W40
Oil Capacity	3.15L
Overall Dimensions(L x W x H)	633 x 559 x 600(mm)
Dry Weight	78KG



THONG FATT JAYA MACHINERY HARDWARE SDN. BHD.

同發機械五金有限公司 (176024-V)

775-779, Jalan Kuala Kangsar, Taman Tasek Jaya, 31400 Ipoh, Perak, Malaysia.
 Tel: 00-605-5468 659, 5455 751, 5479 196, 5454 107
 Fax: 00-605-5482 282, 5474 753
 Email: tfjaya@tm.net.my / tfjaya@streamyx.com
 Website: http://www.thongfattjaya.com.my