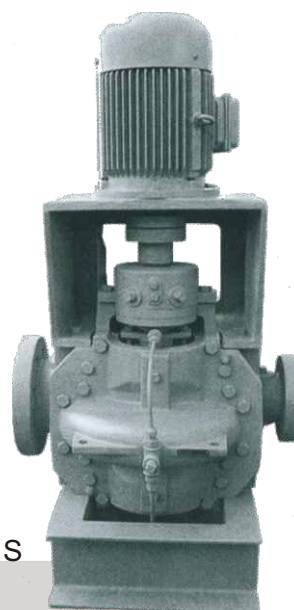


SINGLE STAGE DOUBLE SUCTIONSPLIT CASING PUMP



MEGA & MEGA-V SERIES

Applications

Waterworks, irrigation and drainage pumping stations, power stations, industrial water supply systems, fire fighting systems, marine applications as well as general applications in refineries.

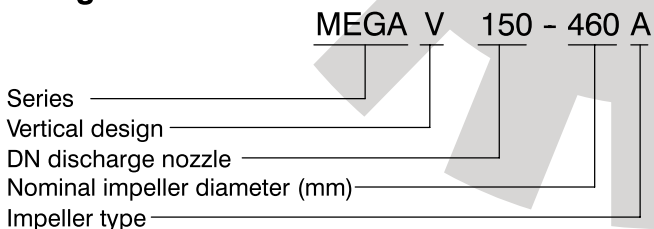
Operating data

Pump sizes	DN 80 up to 350
Capacities	Q up to 4500 l/s
Total heads	H up to 170 m
Operating pressure	p up to 25 bar
Operating temperature	t up to +105°C

Design

Single stage, axially split volute casing pump with double-entry radial impeller, for horizontal or vertical installation. Installation of the horizontal drive either on the left or right side of the pump (optional). Flanges drilled to ISO, DIN, BS or ANSI.

Designation



Bearings

- MEGA** : on both sides grease-lubricated, maintenance-free, deep groove ball bearings, sealed for life,
MEGA-V : top: grease-lubricated, maintenance-free, deep groove ball bearing, sealed for life
 bottom: wear-resistant, medium-lubricated plain bearing of silicon carbide (Residur -bearing)

Shaft seal

Uncooled soft-packed stuffing box or uncooled, single-acting, unbalanced bi-directional mechanical seal acc. to DIN 24960.
 With an operating pressure > 16 bar: mechanical seal, balanced by hydraulic means.

Materials

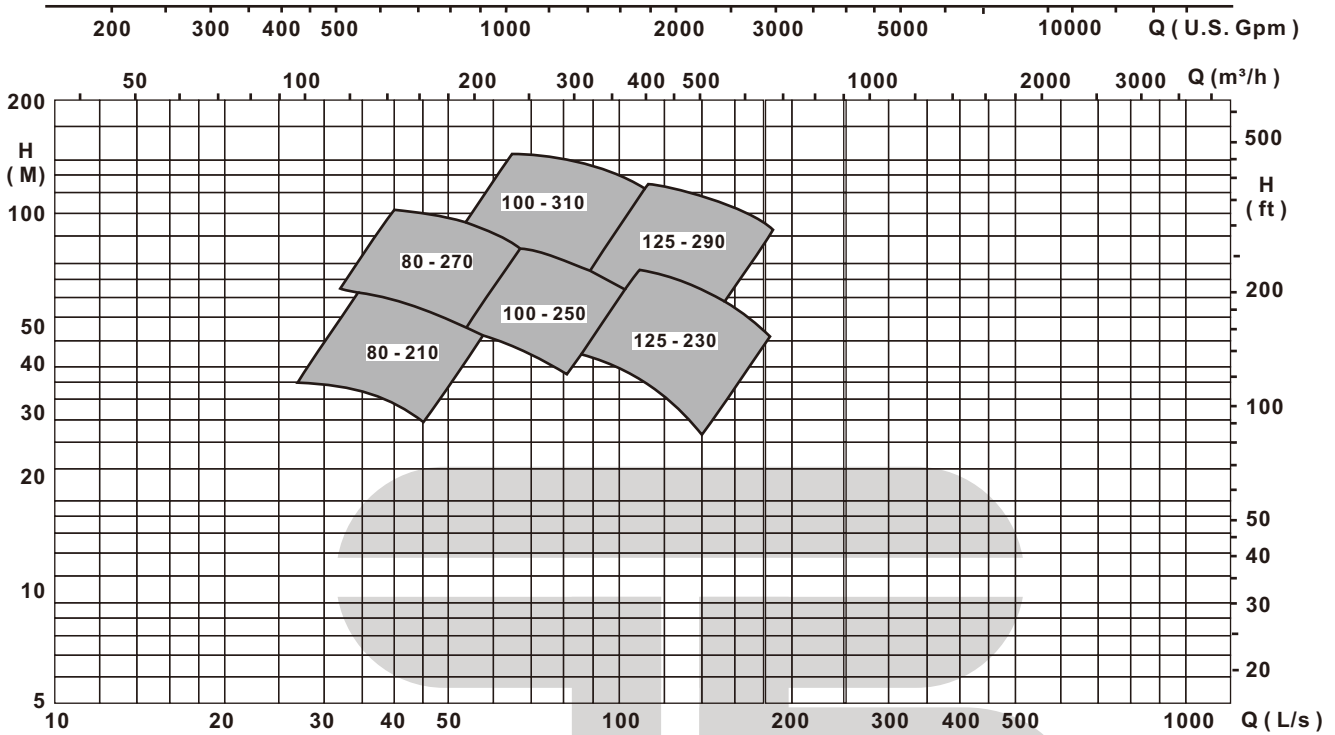
	GB	DIN
Volute casing		
Cast iron	HT250	GG-25
Ductile cast iron	QT400-18	GGG-40
Cast steel	ZG230-450	GS-C25
Impeller		
Cast iron	HT250	GG25
Bronze	ZCuSn10Zn2	G-CuSn10Zn2
Brass	ZCuZn16Si4	G-CuZn15Si4
Stainless steel	ZG1Cr18Ni12Mo2Ti	1.4581
Shaft		
C-steel	45	C45N
Cr-steel	2Cr13	1.4021
Casing wear rings		
Cast iron	HT250	GG-25
Bronze	ZCuSn5Pb5Zn5	G-CuSn5Zn5Pb
Brass	ZCuZn16Si4	G-CuZn15Si4

SINGLE STAGE DOUBLE SUCTIONSPLIT CASING PUMP



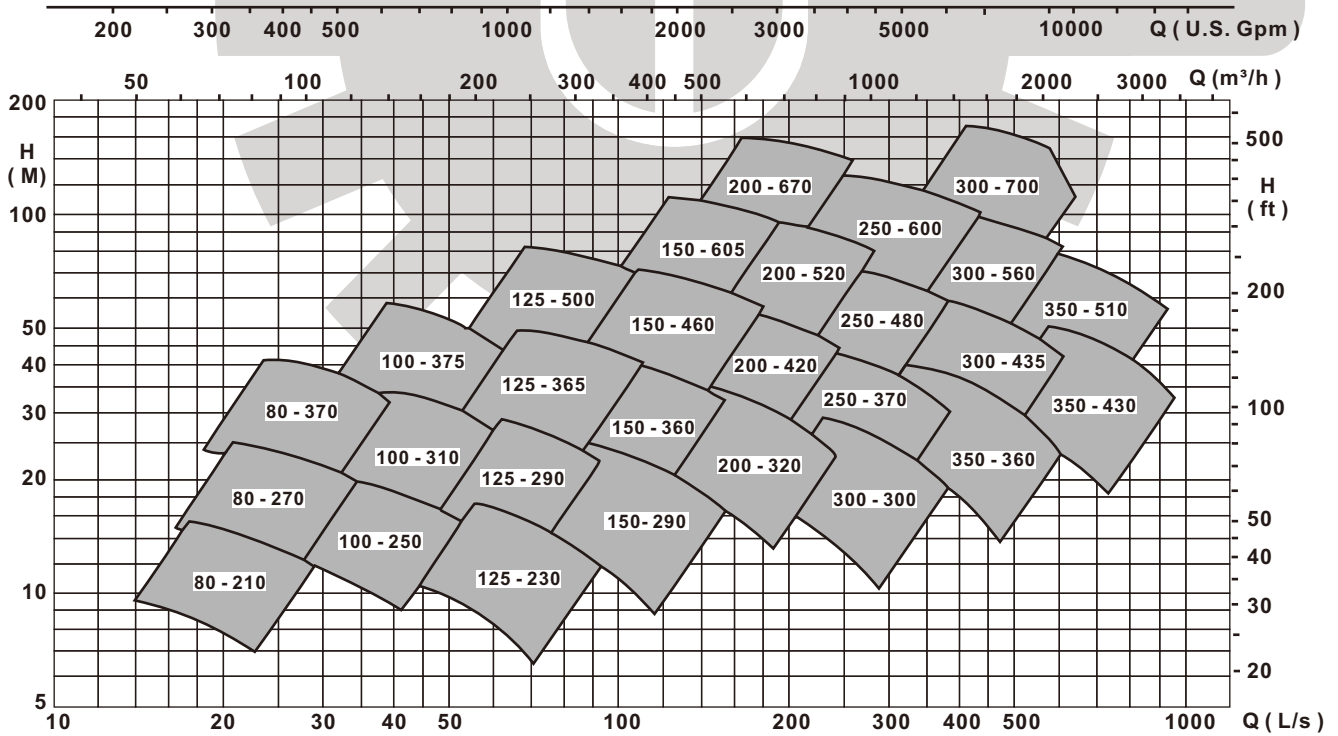
Selection charts 50 Hz
n = 2900 1/min

∩ = η_{Opt} A - impeller
+ = η_{Opt} B - impeller



n = 1450 1/min

∩ = η_{Opt} A - impeller
+ = η_{Opt} B - impeller
○ = η_{Opt} C - impeller

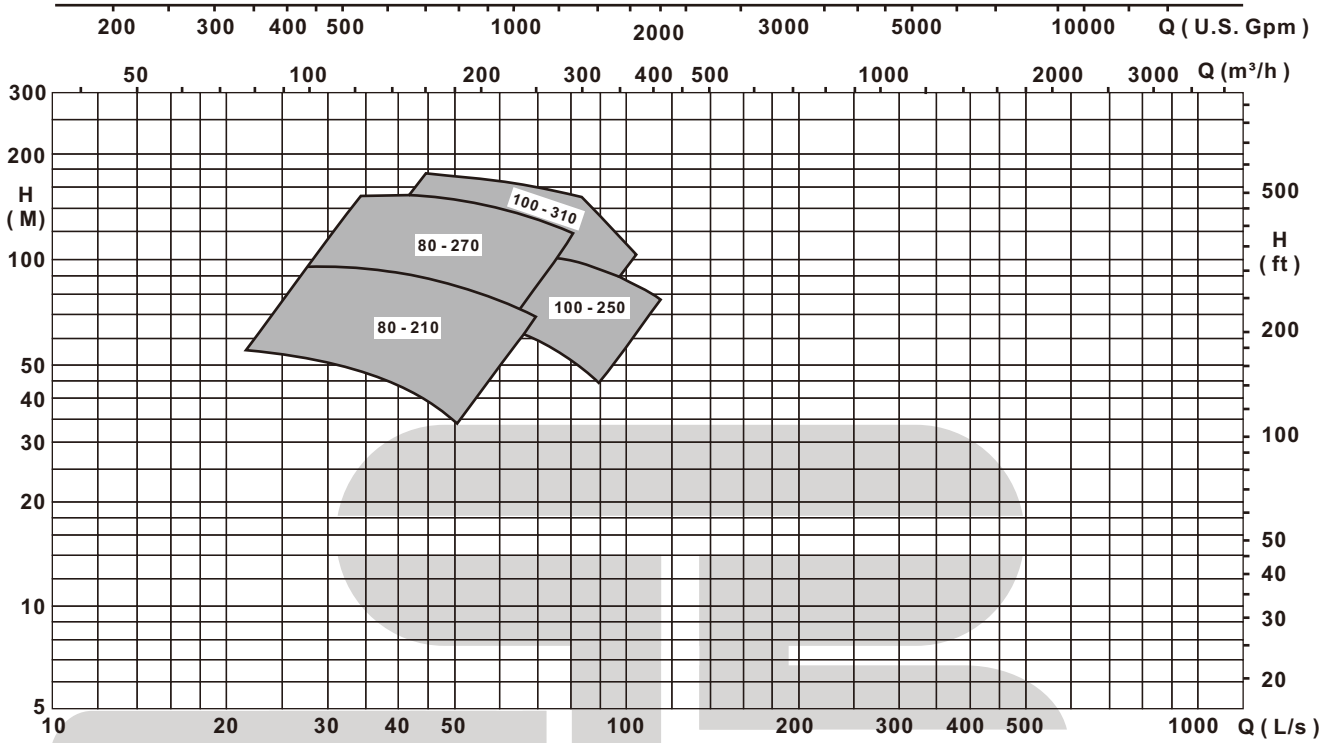


SINGLE STAGE DOUBLE SUCTIONSPLIT CASING PUMP



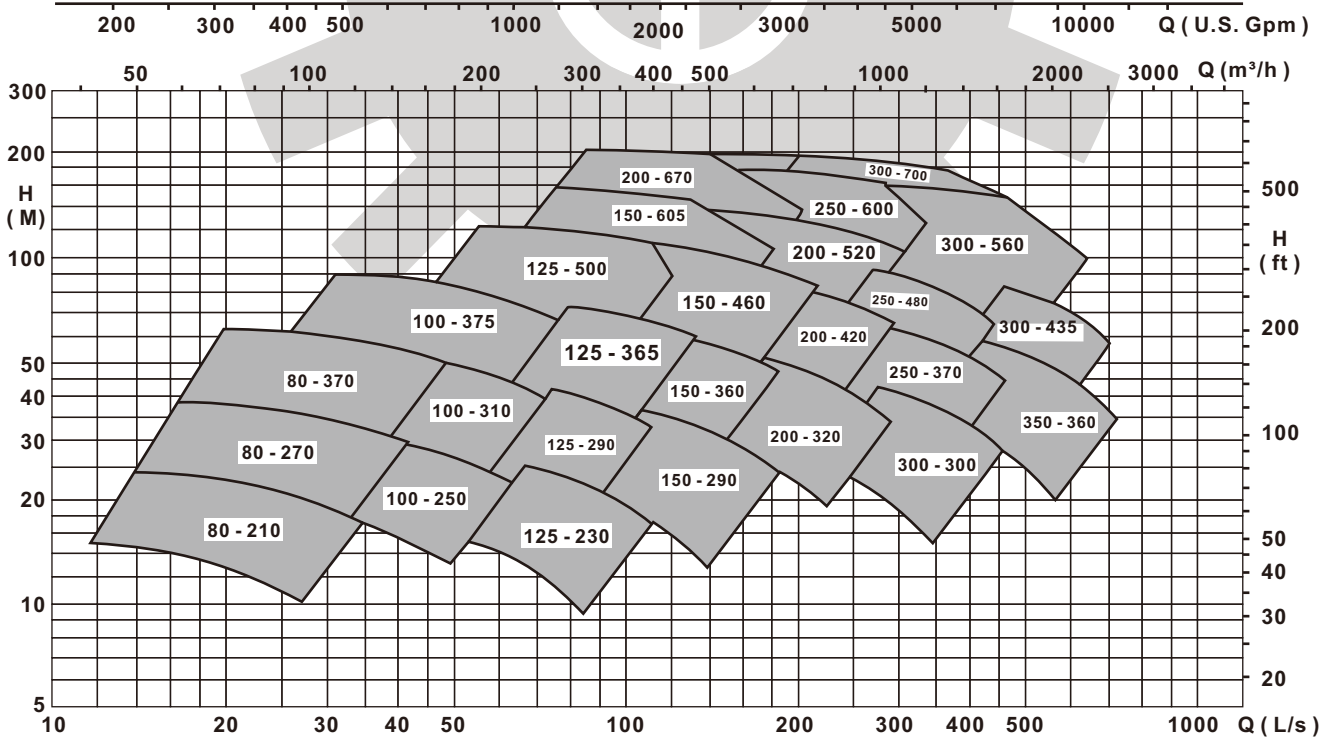
Selection charts 60 Hz
n = 3500 1/min

∩ = η_{Opt} A - impeller
+ = η_{Opt} B - impeller



n = 1750 1/min

∩ = η_{Opt} A - impeller
+ = η_{Opt} B - impeller
○ = η_{Opt} C - impeller



SINGLE STAGE DOUBLE SUCTIONSPLIT CASING PUMP



Your technical advantages

Innovative casing

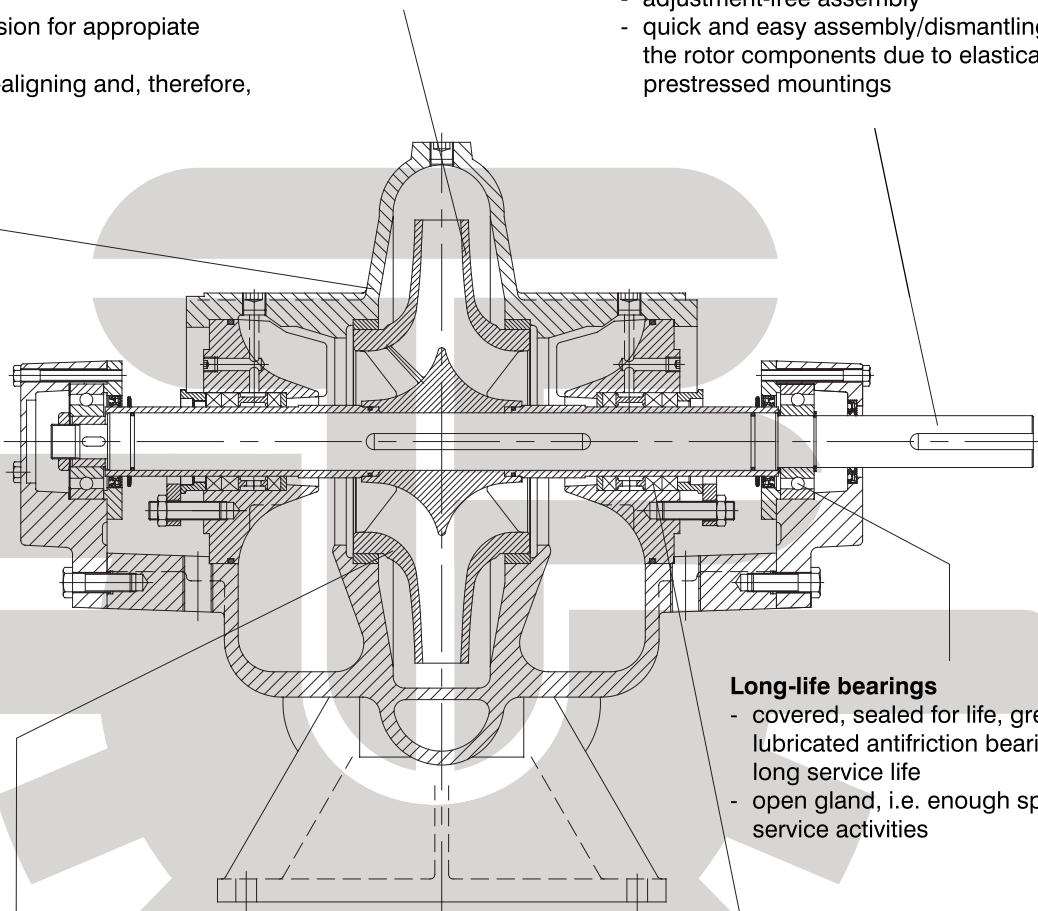
- in-line design
- short distance between bearings and correspondingly short shaft
- leak-tight due to compact joint flange with long, prestressed bolts
- counter-rotation possible with the same parts
- double-volute version for appropriate total heads
- upper casing self-aligning and, therefore, easy to mount

High-performance impeller

- minimal axial thrust due to double-entry impeller
- new vane passage with excellent hydraulic characteristics

Service-friendly shaft

- completely sealed and dry for zero corrosion
- short and rigid with negligible vibrations
- replaceable shaft protecting sleeves
- no threads exposed to pumped medium, i.e. long operating life and no corrosion
- adjustment-free assembly
- quick and easy assembly/dismantling of the rotor components due to elastically prestressed mountings



Long-life bearings

- covered, sealed for life, grease-lubricated antifriction bearings for a long service life
- open gland, i.e. enough space for service activities

Excellent efficiencies

Outstanding NPSH

- computer-optimized double-entry impellers
- smooth surfaces inside the casing and on the impeller
- smooth, quiet running also guaranteed by a large impeller eye area
- no drop in efficiency due to cost-effective, replaceable casing wear rings and impeller wear rings
- smooth, low-wear running due to a swirl-free, low-energy loss inlet

- asbestos-free, potable-water quality soft-packed stuffing boxes
- or bi-directional mechanical seals