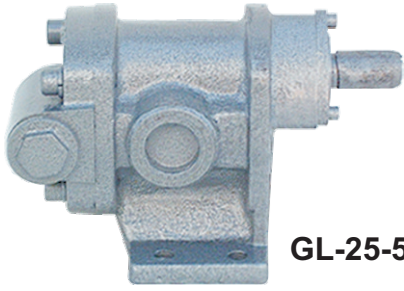


GEAR PUMP



GL-25-5

* Since the pump is of high quality, finished at the same accuracy as hydraulic pump, it can be applied to a wide range of activities from low viscosity oil (such as kerosene, light oil, etc) to medium and high viscosity oil.

* Since the pump is a type of built-in bypass valve, and is equipped with relief function, it can be used safely.

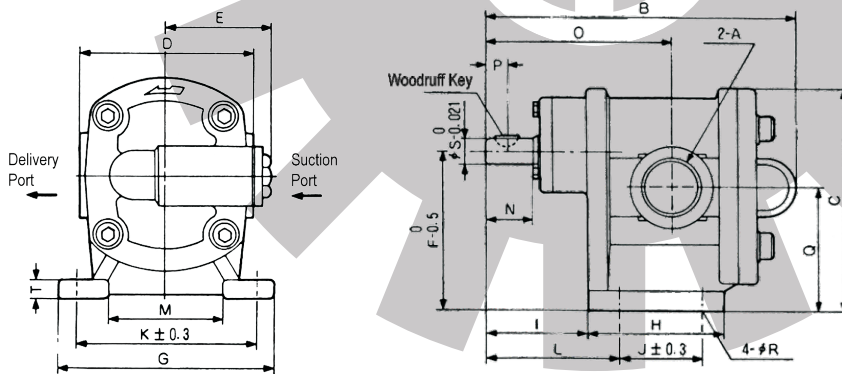


GL-25-5

SPECIFICATION DATA

Model	Connection (mm / inch)	Shaft (mm)	Speed (rpm)	Capacity (L/min)	Pressure (kg/cm ²)	Power (kw)	Weight (kg)	Dimension (mm)
GL-13-5	13 (1/2")	18	1500	18	1-5	0.4	8	234x160x170
GL-13-10					1-10	0.75		
GL-20-5	20 (3/4")	18	1500	31	1-5	0.75	8.5	234x160x170
GL-20-10					1-10	1.5		
GL-25-5	25 (1")	18	1500	48	1-5	1.5	9	234x160x170
GL-25-10					1-10	2.2		
GL-32-5	32 (1-1/4")		1500	73	1-5	2.2	11	317x160x170
GL-32-10					1-10	3.7		
GL-40-5	40 (1-1/2")	22	1500	95	1-5	2.2	21	328x268x235
GL-40-10					1-10	5.5		
GL-50-5	50 (2")	22	1500	150	1-5	3.7	23	328x268x235

Outline Dimensions



Model	Outline Dimension (mm)																				
	A	B	C	D	E	F	G	H	I	J	K	L	M	N	O	P	Q	R	S	T	U
GL-13-5	PS1/2	189	131	108	64.5	95	138	73	71	40	116	87	68	31	113	15	75	11	18	12	4x19
GL-20-5	PS3/4	196													116						
GL-25-5	PS1	208													122						
GL-32-5	PS1-1/4	222													129						
GL-40-5	PS1-1/2	265	189	148	89.5	136	184	112	86	70	156	111	100	40	157	19	106	11	22	16	5x22
GL-50-5	PS2	290													170						