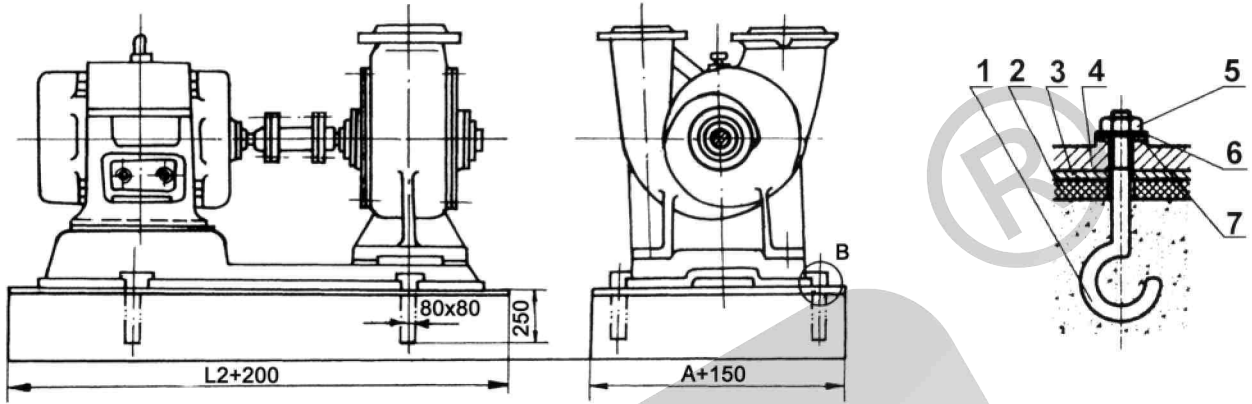


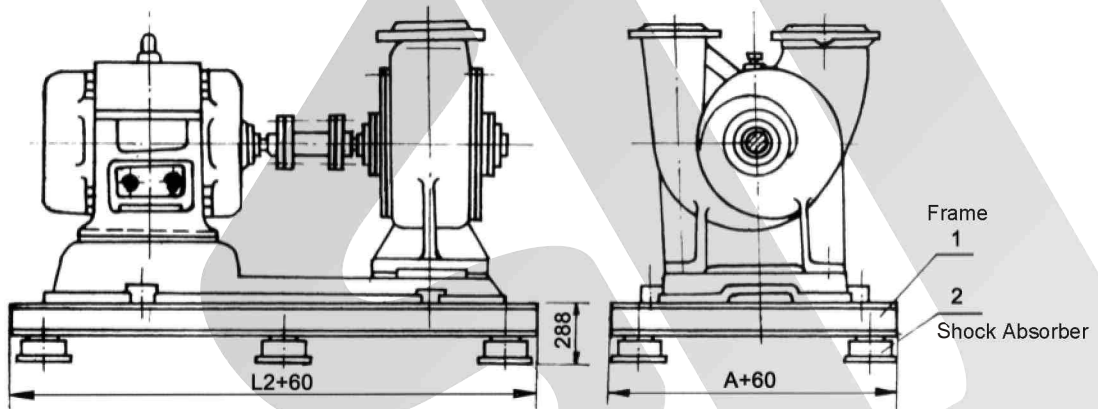
Connecting Method

1. Direct Connecting

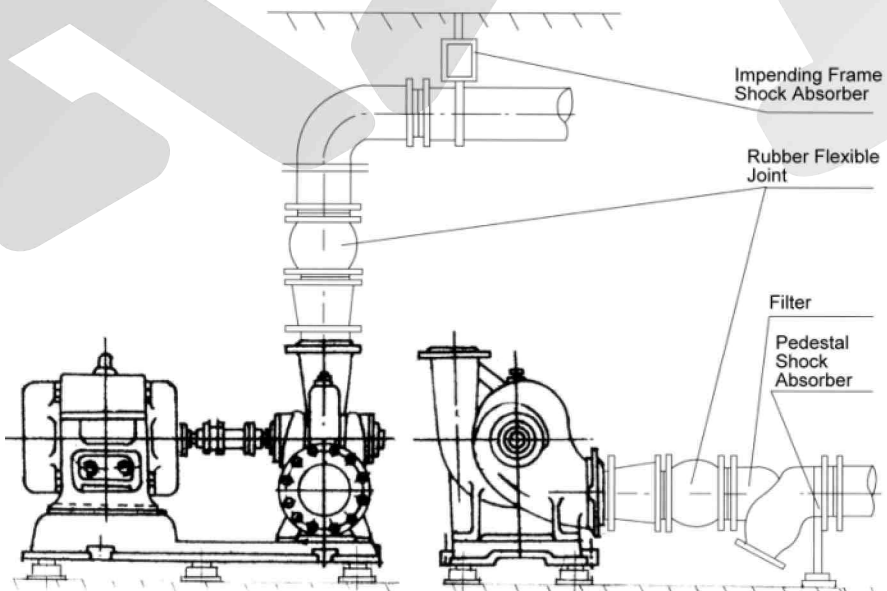


1. Ground Mounting Bolt 2. Rubber anti-vibration pad 3. Steel plate 4. Pump base 5. Nut 6. Spring washer 7. Washer

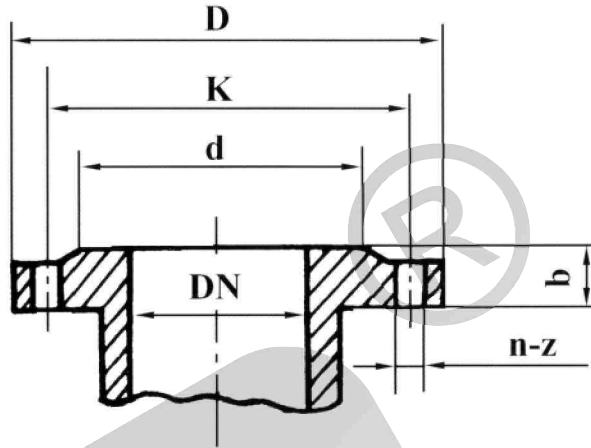
2. Connecting With Rubber Or Spring Shock Absorber



3. There must be rubber flexible joints at the end of inlet and outlet. The weight of piping system can not be attached to the pump set. The inlet and outlet pipes shall be fixed by flexible frame.

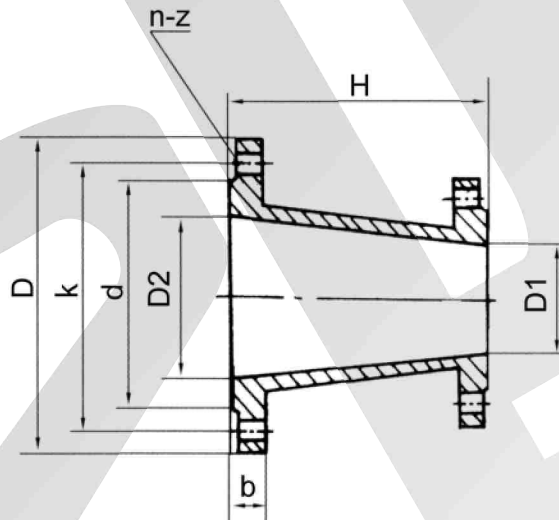


Inlet & Outlet Flange Dimension



Model	Inlet Flange Dimension (mm)						Outlet Flange Dimension (mm)					
	DN	D	K	d	b	n-z	DN	D	K	d	b	n-z
200ADS	200	340	295	268	38	12-23	150	285	240	212	32	8-23
250ADS	250	405	355	320	38	12-27	200	340	295	268	38	12-23
300ADS	300	460	410	370	38	12-27	250	405	355	320	38	12-27
350ADS	350	520	470	430	42	16-27	300	460	410	370	38	12-27

Diffuser Flange Dimension



Diffuser Flange Dimension (mm)								Working Pressure (Mpa)
D1	D2	d	k	D	H	b	n-z	
150	250	320	355	405	300	32	12-26	1.6
200	250	320	355	405	300	32	12-26	1.6
200	300	370	410	460	300	32	12-26	1.6
250	300	370	410	460	300	32	12-26	1.6
250	350	430	470	520	300	36	16-26	1.6
300	350	430	470	520	300	36	16-26	1.6
300	400	482	525	580	300	38	16-30	1.6
350	400	482	525	580	300	38	16-30	1.6
300	450	548	585	640	350	---	---	1.6
350	450	548	585	640	350	---	---	1.6